

# SPEC SHEET + MEASUREMENTS



Eddie Bauer® Women's Full-Zip Microfleece Jacket.

EB225

## Product photo



Warmth and comfort—without bulk. This lightweight, versatile jacket is cozy on its own or layers easily under a jacket when it's cold.

- 5.3-ounce, 100% polyester microfleece with a low-pill finish
- Flatlock stitching throughout
- Princess seams
- Reverse coil zippers
- Front zippered pockets
- Open cuffs and hem
- Contrast embroidered Eddie Bauer logo on right hem

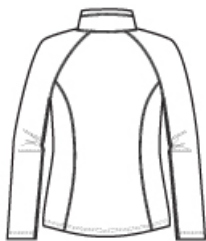
## CARE INSTRUCTIONS

Machine wash cold. Only Non-chlorine bleach when needed. Tumble dry low. Cool iron on reverse side if necessary.

## Sketches



front



back

# SPEC SHEET + MEASUREMENTS



Eddie Bauer® Women's Full-Zip Microfleece Jacket.  
EB225

## PRODUCT MEASUREMENTS

	XS	S	M	L	XL	2XL	3XL	4XL
Bust	17 1/2	18 1/2	19 1/2	21	22 1/2	24	26	28
Body Length at Front	26	26 1/2	27	28	29	30	30 1/2	31
Sleeve From Shoulder	31 1/4	32	32 3/4	33 1/2	34 1/4	35	35 1/2	36

**Bust:** Measured across the chest one inch below armhole when laid flat.

**Body Length at Front:** Measure from high point shoulder to lowest point of hem at front.

**Sleeve From Shoulder:** Measured from high point of shoulder to finished hem at sleeve.

## SIZE CHARTS

	XS	S	M	L	XL	2XL	3XL	4XL
Size	2	4/6	8/10	12/14	16/18	20/22	24/26	28/30
Bust	32-33	34-35	36-37	38-40	41-43	44-46	47-49	50-52

# SPEC SHEET + MEASUREMENTS

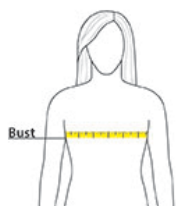


Eddie Bauer® Women's Full-Zip Microfleece Jacket.

EB225

## HOW TO MEASURE

---



### BUST

Measure under the arm and around the fullest part of the bust with arms down, keeping tape horizontal.

## COLORS

---



Black  
PMS BLACK  
C



Grey Steel  
PMS 7540C



Navy  
PMS 533C